



LUFFING TOWER CRANE 8TONS
P5015-8A

INTRODUCTION

The manufacture starts its development and production of luffing jib tower cranes in 1990s, and up to now, it has developed a variety of 80t-m-600t-m luffing jib tower crane products in different series, including outer climbing-frame, inner climbing-frame types, etc.

The intelligent safety monitoring system can be provided as an option to achieve all-round safety monitoring and video surveillance, which can transmit the location, operation status, monitoring data, driver and surveillance video to the monitoring center in real time.

PRODUCT FEATURES

- Outer climbing-frame tower crane:

The standard mast can be assembled and disassembled as a whole, with a simple connection, to achieve good safety and reliability and quick lifting of tower crane.

- Inner climbing-frame tower crane:

The tower crane is installed inside the building and it can climb upward by making use of the building, without requiring any independent foundation and any additional attachment device and standard mast.

The equipment features a low investment cost, a wider construction coverage and a higher work efficiency; the inner climbing-frame tower can also be converted into an attached tower, with a low conversion cost.

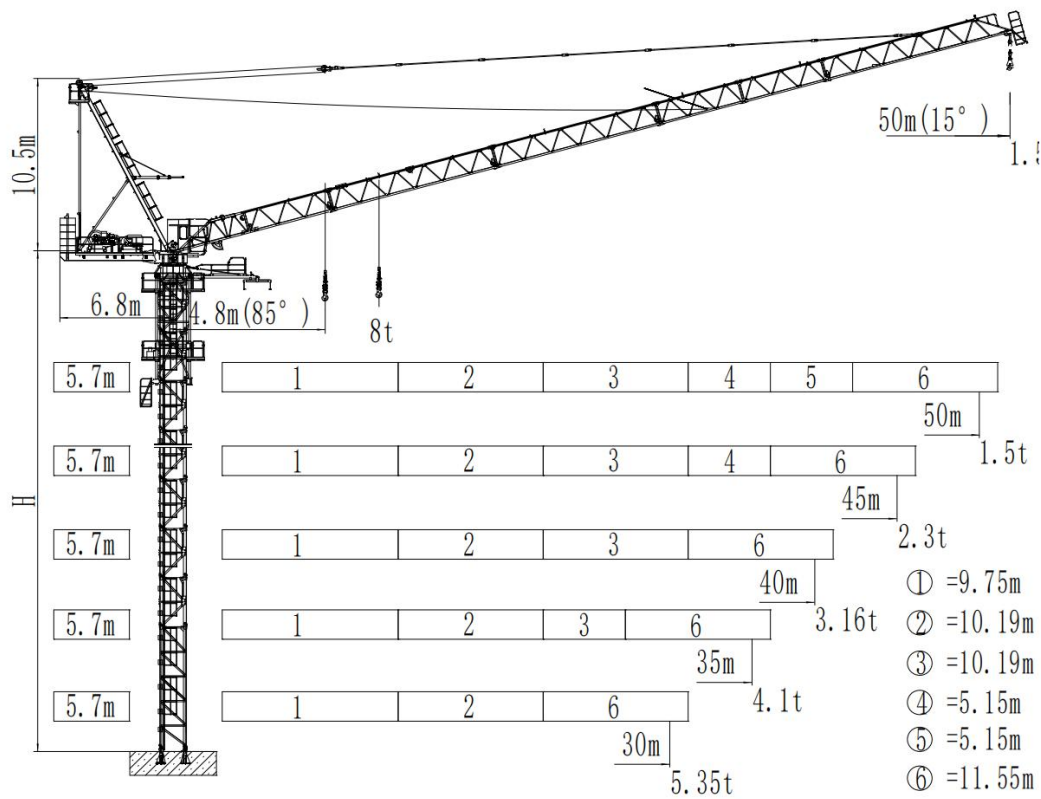
HUNAN KAMUJA MACHINERY & EQUIPMENT CO.,LTD.

Room 818, 4th Floor, Chang Tong Logistic Center, No.18 Qingzhuhu Road, Changsha, Hunan, China
Tel: +86 0731 88677248 juana.yan@kamuja.cn www.kamuja.cn

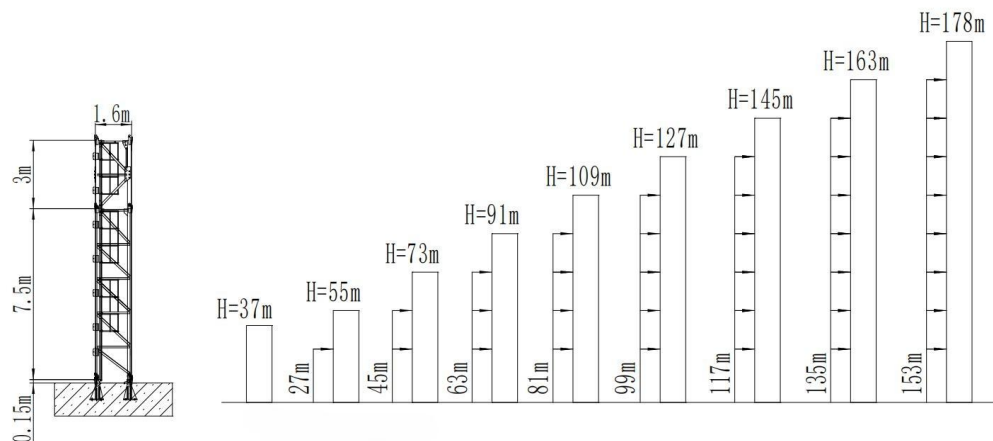
TECHNICAL DATA

P5015-8A

Drawing of Tower Crane Structure



Mast Section



H indicates the height between the boom to the hinge joint.

HUNAN KAMUJA MACHINERY & EQUIPMENT CO.,LTD.

Room 818, 4th Floor, Chang Tong Logistic Center, No.18 Qingzhuhu Road, Changsha, Hunan, China
 Tel: +86 0731 88677248 juana.yan@kamuja.cn www.kamuja.cn

Tower Section Configuration (Till 48m FSH)

Mast Section(m×m×m)	Reinforced section	Standard section	Free Standing Height H(m)	Max.Height with Anchorage(m)
1.6 × 1.6 × 3	0	9	48	227

Load Diagrams

Jib		Max.Load		Length									
Length	Falls	t	m	18	20	22.5	25	27.5	30	35	40	45	50
50m	II	4.00	4.8-34.1	4.00	4.00	4.00	4.00	4.00	4.00	3.81	2.86	2.11	1.50
	III	6.00	4.8-27	6.00	6.00	6.00	6.00	5.82	5.03	3.75	2.80	2.06	1.46
	IV	8.00	4.8-22.2	8.00	8.00	7.88	6.74	5.77	4.96	3.69	2.74	2.01	1.42
45m	II	4.00	4.4-35	4.00	4.00	4.00	4.00	4.00	4.00	4.00	3.05	2.30	
	III	6.00	4.4-27.4	6.00	6.00	6.00	6.00	5.97	5.22	3.95	3.00	2.26	
	IV	8.00	4.4-22.5	8.00	8.00	8.00	6.91	5.95	5.15	3.90	2.95	2.22	
40m	II	4.00	4-35.4	4.00	4.00	4.00	4.00	4.00	4.00	4.00	3.15		
	III	6.00	4-27.7	6.00	6.00	6.00	6.00	6.00	5.32	4.06	3.11		
	IV	8.00	4-22.8	8.00	8.00	8.00	7.01	6.06	5.26	4.02	3.08		
35m	II	4.00	3.6-35	4.00	4.00	4.00	4.00	4.00	4.00	4.00			
	III	6.00	3.6-27.7	6.00	6.00	6.00	6.00	6.00	5.32	4.10			
	IV	8.00	3.6-22.5	8.00	8.00	8.00	6.98	6.05	5.28	4.06			
30m	II	4.00	3.3-30	4.00	4.00	4.00	4.00	4.00	4.00				
	III	6.00	3.3-27.8	6.00	6.00	6.00	6.00	6.00	5.35				
	IV	8.00	3.3-22.5	8.00	8.00	8.00	6.97	6.07	5.31				

Main Technical Parameters

Hoisting performance	Rated hoisting moment		1250 kN·m				
	Maximum hoisting capacity		8 t				
Mechanism performance	2Falls		3Falls		4Falls		Motor
	t	m/min	t	m/min	t	m/min	
Lifting	4	0~40	6	0~26.5	8	0~20	30 kW
	1	0~98	1.5	0~65	2	0~49	
Trolleying	15° ~ 85° ≤2.4min						30 kW
Slewing	0 ~ 0.7 r/min						2×5.5kW

Note: Actual unit may vary from the picture and specification as shown.

HUNAN KAMUJA MACHINERY & EQUIPMENT CO.,LTD.

Room 818, 4th Floor, Chang Tong Logistic Center, No.18 Qingzhuhu Road, Changsha, Hunan, China

Tel: +86 0731 88677248 juana.yan@kamuja.cn www.kamuja.cn